

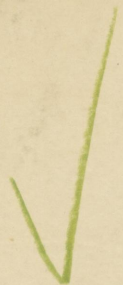
Walther

Preludio  
con Fuga

*J. G. Walther.*  
*Preludio con Fuga*  
1741. **R**

HSB 2 - SMG

RA 6353



Philipp Spitta.

Aus dem Nachlass des Herrn Geheimen  
Regierungsraths Prof. Dr. Spitta.



La. B.

No. 6639.

Unter-No. 1483

R

3361.

N 1915.  
127.

(For Waifu)  
Kilage

von dieser Compofition fagt Walther unter dem 22. 9. 1742 an Bockmeyer,  
daß er fie am 26. 1. 1741 an Fiedersdorff gefendet habe. Brief abfchriftlich  
in meinem Befitz.

Preludio con Fuga,  
per dove  
dell' Augustissima liberalità  
del  
Serenissimo e Potentissimo Prencipe  
**FEDERICO IV.**  
Rè di Prussia, Marchese di Brandenborgo etc:  
al di Cui Cameriere Maggiore  
Molt' Illustre Signore  
**M. G. Fredersdorfio,**  
come  
dalla detta Sua Reale Maestà  
la Villa, Czernicovia, ch' è vicina à Rheinsberga,  
al Medesimo  
era clementemente donata,  
congratula  
un Servitor' obligatissimo  
avanti otto anni à Lui stato conosciuto  
Giovanni Godofredo Walthero,  
Organista della Chiesa cattedrale  
di Vinarìa.

*Scolpit' in Rame et fatto Stampare  
Da Giovanni Christiano Leopold Intagliatore  
in Augusta*

*Con Gratia e Privilegio di Sua Sacra Cesarea Maestà.*

1741.

127.





RA 6353

*Preludio.*

Handwritten musical notation for the first system of the Preludio, measures 1-8. The music is in G major (one sharp) and common time (C). It features a treble and bass staff with various rhythmic patterns, including eighth and sixteenth notes, and rests. A first ending bracket is visible at the end of the system.

Handwritten musical notation for the second system of the Preludio, measures 9-16. The music is in G major and common time. It includes a treble and bass staff with complex rhythmic figures. A tempo change to *Allegro* is indicated in the middle of the system. A second ending bracket is also present.

Handwritten musical notation for the third system of the Preludio, measures 17-24. The music continues in G major and common time, featuring treble and bass staves with intricate melodic and harmonic lines.

Handwritten musical notation for the fourth system of the Preludio, measures 25-32. The music is in G major and common time, showing a continuation of the complex textures from the previous systems.

*Fuga. un poco vivace.*

*Adagio.*

Handwritten musical notation for the first system of the Fuga, measures 1-8. The music is in G major and common time. It features a treble and bass staff with a more rhythmic and driving character than the Preludio. A tempo change to *Adagio* is indicated in the middle of the system.

Handwritten musical notation for the second system of the Fuga, measures 9-16. The music continues in G major and common time, maintaining the complex, contrapuntal texture of the fugue.

Handwritten musical notation for the first system, consisting of two staves. The music is in treble and bass clefs with a key signature of one sharp (F#). It features a complex texture with many sixteenth and thirty-second notes, including slurs and dynamic markings.

Handwritten musical notation for the second system, continuing the complex texture from the first system with similar rhythmic patterns and dynamic markings.

Handwritten musical notation for the third system, maintaining the intricate melodic and harmonic lines.

Handwritten musical notation for the fourth system, showing a continuation of the fast-moving passages.

*Grave.*

Handwritten musical notation for the fifth system, marked *Grave*. The tempo and mood change significantly, with much slower note values. The system includes dynamic markings of *piano* and *forte*. The time signature is 3/2.

Handwritten musical notation for the sixth system, continuing the *Grave* section with dynamic markings of *piano* and *forte*.



*piano* *forte*

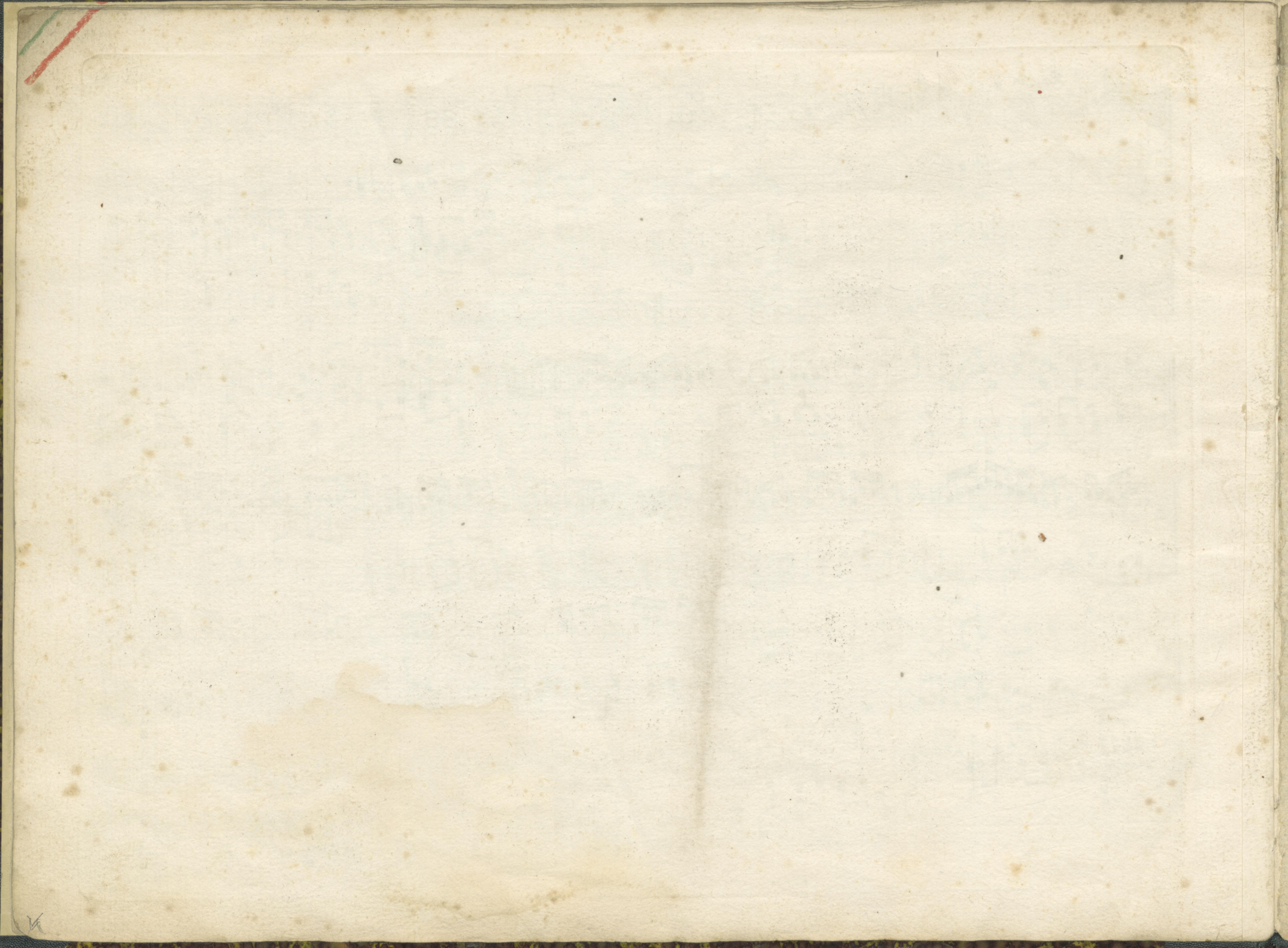
*Aria, a 2 Fastature.*

*Fast: 2.* *Fast: 1.* *Fast: 2.*

*Fast: 1.* *Fast: 2.* *Fast: 2.* *Fast: 2.*

*Fast: 1.* *Fast: 2.* *Fast: 1.*

*Fast: 2.*



14



