

1807  
166.

0 +

#

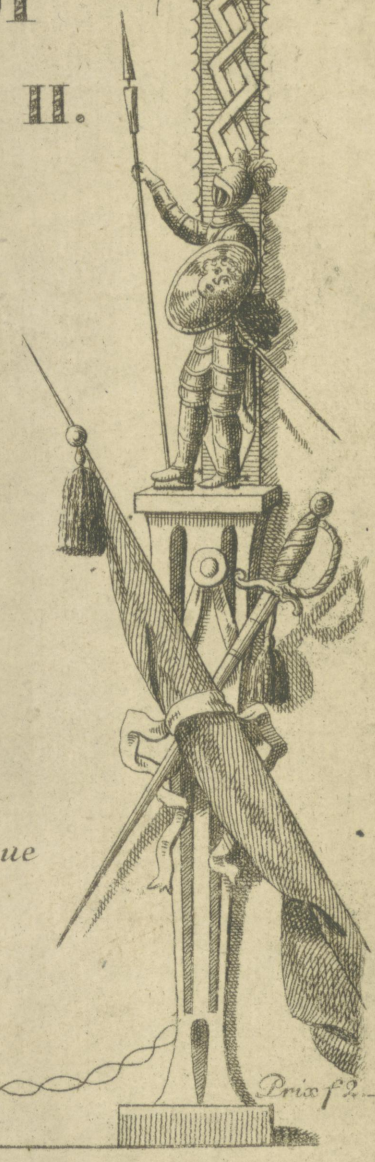
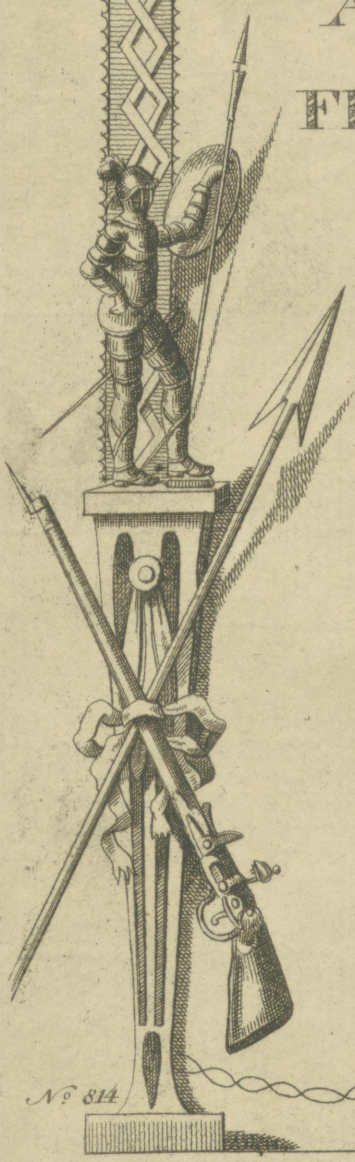


TROIS SONATES  
 Pour le  
 VIOLONCELLE  
 Présentées très respectueusement  
 À SA MAJESTÉ le ROI  
 FREDERIC GUILLAUME II.

Par l'Editeur J. J. Hummel  
 Conseiller de Commerce.

et composées par  
 J. H. V. ROSE  
 Organiste de la Cathédrale  
 de Quedlinbourg  
 Oeuvre Premier.

Chés J. J. Hummel,  
 à Berlin avec Privilège du Roi,  
 à Amsterdam au grand Magazin de Musique  
 et aux Adresfes ordinaires.



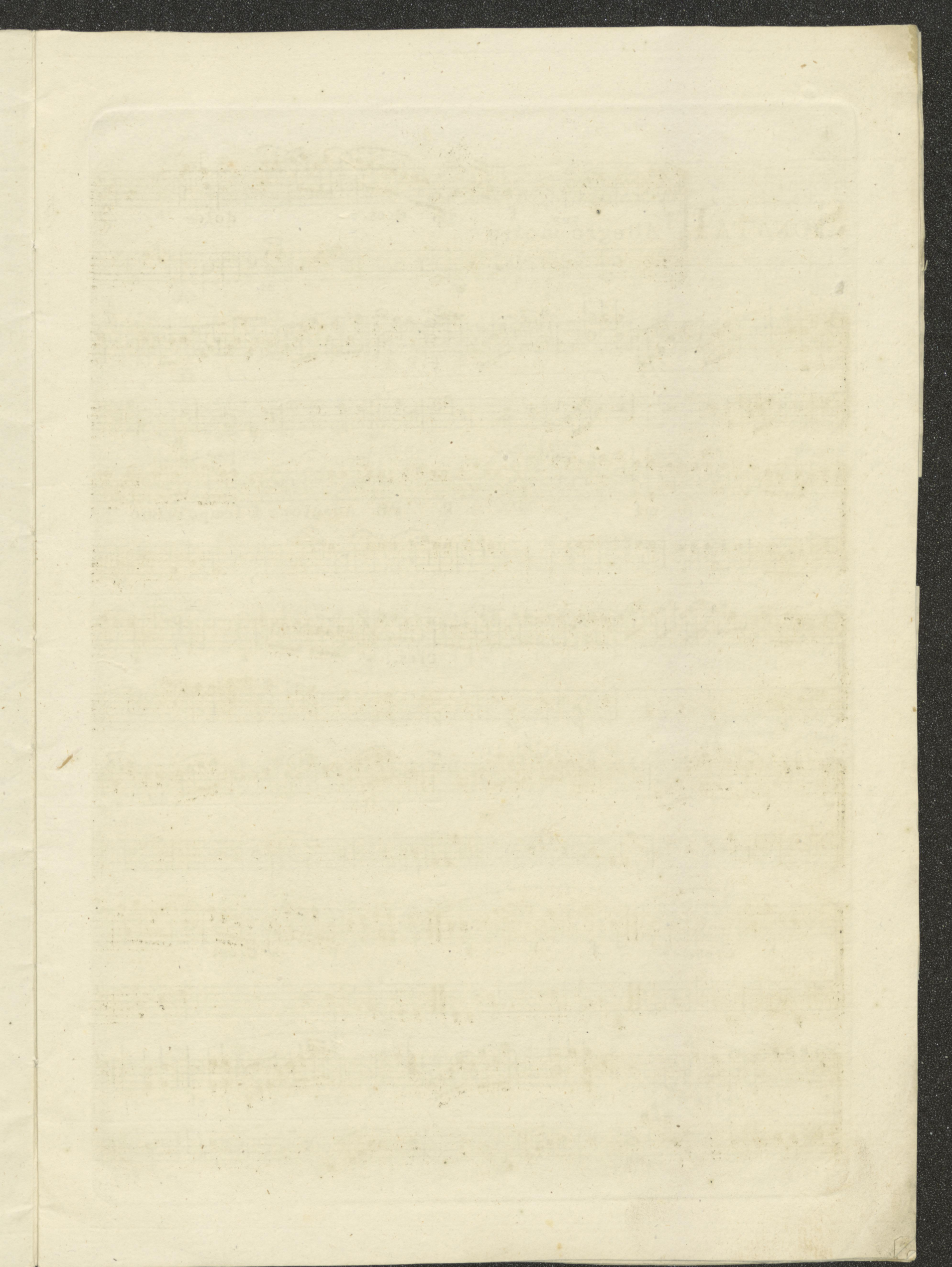
Nº 814

Prix f 2...











# SONATA I

Allegro <sup>ten.</sup> molto

Musical score for Sonata I, page 4. The score consists of ten systems of two staves each. The first system includes dynamic markings 'f', 'p', 'Cres.', and 'dolce'. The second system includes 'f', 'P', 'f', 'P', 'f', and 'ff'. The third system includes 'mf', 'P', 'PP', 'Adagio', 'f', and 'Tempo Primo'. The fourth system includes 'P', 'Cres.', 'f', and 'P'. The fifth system includes 'f', 'sfP', 'f', and 'dolce'. The sixth system includes 'P', 'Cres.', 'f', 'P', 'f', 'P', and 'Cres.'. The seventh system includes 'dolce', 'f', 'P', 'sf', 'P', and 'sf'. The score features various musical notations including treble and bass clefs, a key signature of one sharp (F#), and a common time signature (C).



Musical score page 5, featuring ten systems of staves. The notation includes various musical symbols such as notes, rests, and dynamic markings. Fingerings are indicated by numbers 0-4 above notes. Performance instructions like "Sotto voce", "Adagio", and "Tempo Primo" are present. The page number "814" is at the bottom right.

System 1: Bass clef, dynamic markings *P*, *f*, *ff*. Fingerings: 3, 4, 0, 3, 0, 4, 3, 0.

System 2: Bass clef.

System 3: Treble clef, dynamic markings *f*, *decresc.*, *decresc.*.

System 4: Bass clef.

System 5: Treble clef, dynamic markings *f*, *P*, *f*, *P*, *f*, *P*, *f*.

System 6: Bass clef.

System 7: Treble clef, performance instructions *Sotto voce*, *pp*, *Adagio*, *f*, *Tempo Primo*.

System 8: Bass clef.

System 9: Treble clef, dynamic markings *P*, *Cres.*, *f*.

System 10: Bass clef, dynamic markings *P*, *f*, *f*, *dolce*.

System 11: Treble clef, dynamic markings *f*, *P*, *cres. f*, *ff*, *P*, *pp*. Fingerings: 1, 2.

System 12: Bass clef.



mf f p f f dim. pp f

Largo

P f P f f P dolce f

decres. dolce mf f P f P f

P dolce f P f P f

P f decres. f

Piano f P f sf P f P sf P sf P

Andanté con Var:

Var: I. pp f P f

pp p Cres f P f

Var: II. Pizzic.



*p* *f* *P* *f* *deces.* *PP*  
 Flageolet  
 Var: III. Col'arco

5/2

3/4  
 Var: IV.

3/4  
 Fin  
 Var IV. Dal Segno al Fin

2/4  
 Var: V.

2/4  
 Fin

2/4

2/4  
 Var: V.  
 Dal Segno  
 al Fin



# SONATA II

*dolce* *f*

*Moderato*

*f* *mf*

*fp* *fp* *fp* *fp* *f*

*P* *f*

*P* *mf* *decres.* *dolce* *f* *dolce*

*f* *P* *f* *P* *Cres* *3*

*P* *dolce*

*f* *Sotto voce* *P* *f*



*p dolce*

*f 8va*

*loco fp fp fp fp f*

*pp f*

*w 1 2 pp mf p*

*Adagio Cantabile dolce p f*

*mf ff p Cres. f p f p*

*f dolce p Cres f p Volta Subito*



mf f P Cresf P sf ff dolce f

dolce f

Rondo Andantino

f

f

P Cres f P Adagio Tempo dolce

Primo loco Sotto voce

P PP f



*dolce* *f*

*P* *Andante*

*Sotto voce una Corda*  
*Andantino*

*f* *P* *Cres*

*f* *P*

*P* *Cres* *f*

*P dolce* *f* *P dolce*

*mf*



# SONATA III

*P* *f* *P*  
**Allegro molto**

*ten. f* *dolce* *f* *P*

*f* *P* *f*

*P* *f*

*gva* *dolce*

*loco*

*P* *f* *P*

*ten. f* *P* *f*



This page of musical notation consists of ten systems of staves. The notation includes treble and bass clefs, a key signature of one flat, and a time signature of 3/4. The music features a variety of rhythmic patterns, including sixteenth and thirty-second notes, and rests. Dynamics such as *p*, *f*, and *ten.* are used throughout. Performance instructions include *dolce*, *loco*, and *8va*. The notation is arranged in pairs of staves for each system, with some systems having a grand staff (treble and bass clefs on the same system). The page concludes with a double bar line and repeat signs.



dolce f p dolce f p una Corda loco ad lib. una Corda  
 Largo sf dolce p Cres. p  
 8va loco dolce  
 f p dolce f p p mf ff  
 ad lib: decres. p mf  
 mf f p pp p f  
 Andantino ten  
 dolce f

k



Musical score page 15, page number 314. The score consists of ten systems of two staves each (treble and bass clef). The notation includes various musical symbols such as notes, rests, and dynamic markings. The page is numbered "15" in the top right corner and "314" in the bottom right corner.

Dynamic markings and performance instructions include: *P*, *f*, *dolce*, *ten.*, *Cres.*, *ad libitum P*, *PP*, *f*, *Sotto voce*, *1*, *3*, *dolce*, *f*, *P*, *f*, *P*, *dolce*, *f*, *P*, *Fin*.



